

(Mouse) Mlf1 Antibody (Center)
Purified Rabbit Polyclonal Antibody (Pab)
Catalog # AP20887a

Specification

(Mouse) Mlf1 Antibody (Center) - Product Information

Application	WB,E
Primary Accession	O9QWV4
Reactivity	Human, Mouse
Host	Rabbit
Clonality	Polyclonal
Isotype	Rabbit IgG
Calculated MW	30432

(Mouse) Mlf1 Antibody (Center) - Additional Information

Gene ID 17349

Other Names

Myeloid leukemia factor 1, Hematopoietic lineage switch 7, Myelodysplasia-myeloid leukemia factor 1, Mlf1, Hls7

Target/Specificity

This (Mouse) Mlf1 antibody is generated from a rabbit immunized with a KLH conjugated synthetic peptide between 91-126 amino acids from the Central region of (Mouse) Mlf1.

Dilution

WB~~1:1000

E~~Use at an assay dependent concentration.

Format

Purified polyclonal antibody supplied in PBS with 0.09% (W/V) sodium azide. This antibody is purified through a protein A column, followed by peptide affinity purification.

Storage

Maintain refrigerated at 2-8°C for up to 2 weeks. For long term storage store at -20°C in small aliquots to prevent freeze-thaw cycles.

Precautions

(Mouse) Mlf1 Antibody (Center) is for research use only and not for use in diagnostic or therapeutic procedures.

(Mouse) Mlf1 Antibody (Center) - Protein Information

Name Mlf1

Synonyms Hls7

Function Involved in lineage commitment of primary hemopoietic progenitors by restricting erythroid formation and enhancing myeloid formation. Interferes with erythropoietin-induced erythroid terminal differentiation by preventing cells from exiting the cell cycle through suppression of CDKN1B/p27Kip1 levels. Suppresses COP1 activity via CSN3 which activates p53 and induces cell cycle arrest. Binds DNA and affects the expression of a number of genes so may function as a transcription factor in the nucleus.

Cellular Location

Cytoplasm. Nucleus. Cell projection, cilium. Cytoplasm, cytoskeleton, cilium basal body.
Note=Shuttles between the cytoplasm and nucleus.

Tissue Location

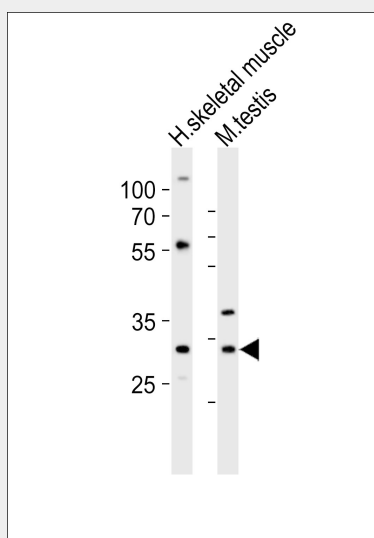
Highly expressed in skeletal muscle, heart, testis. Also found in lung, but not in spleen, thymus, bone marrow, liver and kidney.

(Mouse) Mlf1 Antibody (Center) - Protocols

Provided below are standard protocols that you may find useful for product applications.

- [Western Blot](#)
- [Blocking Peptides](#)
- [Dot Blot](#)
- [Immunohistochemistry](#)
- [Immunofluorescence](#)
- [Immunoprecipitation](#)
- [Flow Cytometry](#)
- [Cell Culture](#)

(Mouse) Mlf1 Antibody (Center) - Images



Western blot analysis of lysates from human skeletal muscle, mouse testis tissue lysate (from left to right), using Mlf1 Antibody (Center)(Cat. #AP20887a). AP20887a was diluted at 1:1000 at each lane. A goat anti-rabbit IgG H&L(HRP) at 1:10000 dilution was used as the secondary antibody. Lysates at 20ug per lane.

(Mouse) Mlf1 Antibody (Center) - Background

Involved in lineage commitment of primary hemopoietic progenitors by restricting erythroid formation and enhancing myeloid formation. Interferes with erythropoietin-induced erythroid terminal differentiation by preventing cells from exiting the cell cycle through suppression of CDKN1B/p27Kip1 levels. Suppresses RFWD2/COP1 activity via CSN3 which activates p53 and induces cell cycle arrest. Binds DNA and affects the expression of a number of genes so may function as a transcription factor in the nucleus.

(Mouse) Mlf1 Antibody (Center) - References

Hitzler J.K.,et al.Am. J. Pathol. 155:53-59(1999).
Williams J.H.,et al.EMBO J. 18:5559-5566(1999).
Lim R.,et al.J. Biol. Chem. 277:40997-41008(2002).
Winteringham L.N.,et al.Oncogene 23:5105-5109(2004).
Winteringham L.N.,et al.J. Biol. Chem. 281:38791-38800(2006).